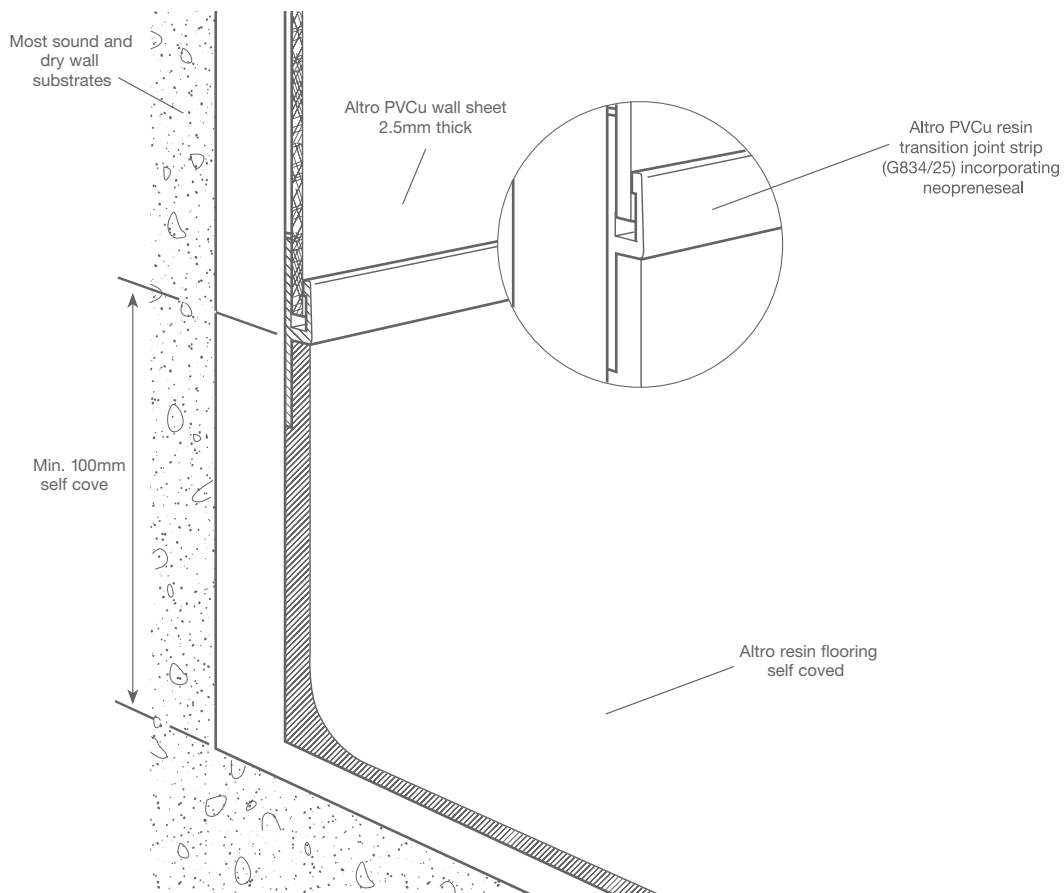


# Altro PVCu wall sheet to Altro resin flooring detail

typical specification (Ref: WF6)

Altro PVCu wall sheet 2.5mm thick installed over most sound, dry substrates to minimum 100mm height from floor, finished into Altro PVCu resin transition joint strip (G834/25) incorporating neoprene seal with minimum 5mm expansion gap between cladding and centre of web. If necessary,

mechanically fasten lower edge of resin transition strip back to substrate. Install Altro resin flooring (to thickness recommended for type / application) and self covered up to lower front edge of joint transition strip.



**For further information or technical advice**  
**tel: 01462 707600**  
**email: [enquiries@altro.com](mailto:enquiries@altro.com) or [www.altro.com](http://www.altro.com)**