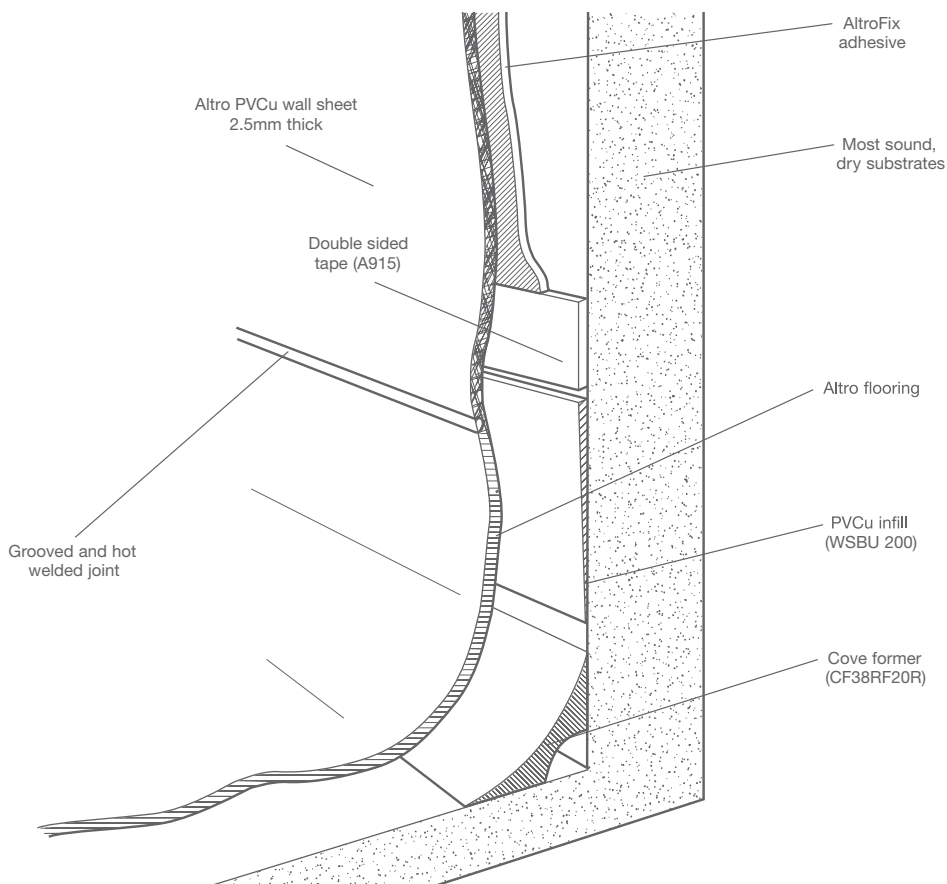


# Altro PVCu wall sheet to Altro flooring detail (welded)

typical specification (Ref: WF7)

Altro PVCu wall sheet 2.5mm thick installed over most sound, dry and level substrates to minimum 100mm height from floor, fixed with AltroFix™ W139 (A814) or W157 (A818) adhesive and double sided tape (A915), overlapping PVC infill section (WSBU 200). Infill to be suitably positioned behind

wall cladding to accommodate the various flooring thicknesses. Altro flooring fitted over cove former (CF38R/CF20R) and finished to PVCu cladding with pre-grooved, hot welded joint as per Altro installation recommendations.



**For further information or technical advice**

**tel: 01462 707600**

**email: [enquiries@altro.com](mailto:enquiries@altro.com) or [www.altro.com](http://www.altro.com)**